

# Belgard "Green" Products

## PERMEABLE:

A good idea, pure and simple.

Environmental stress is increasingly being placed on our resources. As more land is developed, the natural water filtration provided by the soil is continually being diminished. In turn, stormwater runoff—mixed with motor oil, fertilizers, and other contaminants—can pollute lakes, rivers, coastlines, and groundwater.

### Permeable benefits:

- Reduces pollution from rainwater runoff
- Reduces runoff from the common rainstorm by as much as 100%
- 50 year life-cycle for surface
- Outperforms similar systems in harsh climates or freeze thaw cycles.
- Replaces detention/retention ponds

As part of a bio-aquifer stormwater system, Belgard Environmental permeable pavers can virtually eliminate runoff, potentially removing the need for retention ponds or underground sewer pipes.



## Subterra

GREAT-LOOKING AND GREEN. Subterra Stone might very well be the most attractive, natural-looking permeable paver on the market. With its false joint structure, Subterra offers the elegant look of natural chiseled stone, yet it is easy to install. Combined with its unsurpassed environmental benefits, Subterra is ideal for homeowners who desire environmental stewardship without compromising beauty and style.



### Shapes



### MODULAR

11 3/8" x 7 9/16" x 80mm  
Approx. 1.67 pavers/sq ft

### Patterns



Stock Bond



90° Herringbone



# Eco Dublin

SMART-LOOKING STYLE meets smart science. The classic look of cutstone combines with contemporary materials technology in Eco Dublin, the latest addition to Belgard's Environmental Collection of permeable paver systems.



Shapes



MODULAR

- 3 1/8" x 6 15/16" x 10 5/16"
- 3 1/8" x 6 15/16" x 10 5/16"
- 3 1/8" x 6 15/16" x 10 5/16"

Patterns



Pattern "B"

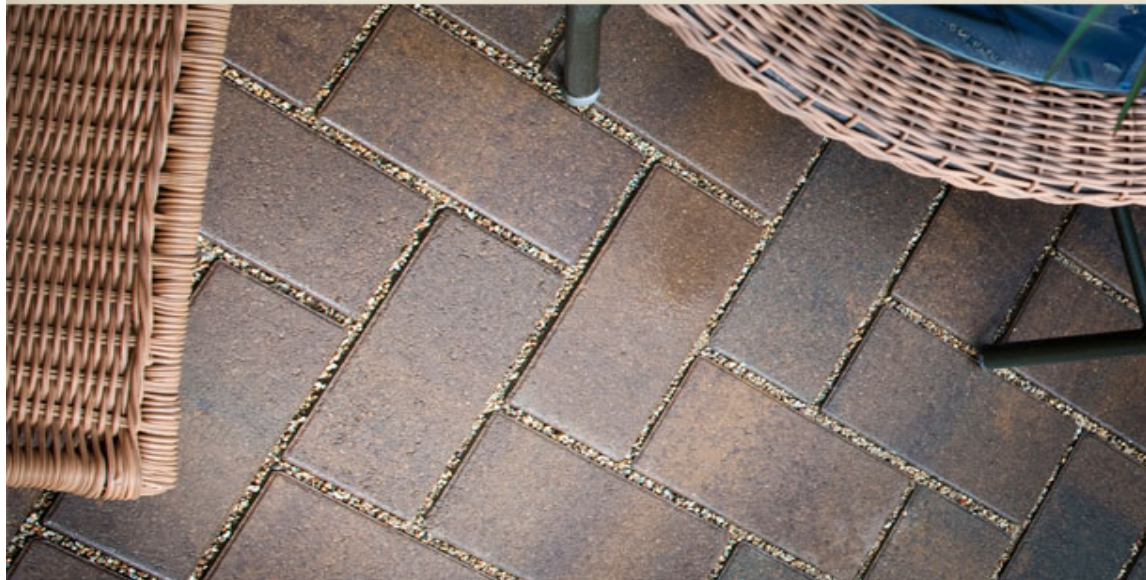


Modular



# Aqua Roc

AN ATTRACTIVE RESIDENTIAL LOOK that stands up to even the heaviest vehicular traffic. Environmentally and economically sound, Aqua Roc permeable pavers are comfortable underfoot, meeting the Americans with Disabilities Act architectural guidelines.



Shapes



MODULAR

- 3 1/8" x 4 1/2" x 9"

Patterns



45° Herringbone



Basketweave